

INGEMAR

Ingegneria Marittima

NEWS 2011

Following the extremely gratifying results of 2010 which confirmed the group's constant growth-trend over the previous three years, notwithstanding a general downturn in sales of new boats, Ingemar has recorded a decidedly positive performance in the first six months of 2011.

Thanks to various ongoing projects both in Italy and abroad aimed at meeting the endemic lack of moorings, operating results are today sufficiently encouraging as to look forward to a positive outcome for 2011. Our constant commitment to develop a distinctive product through technological innovation and the technical skills of our workforce, strengthen our image

as a sure and reliable partner both in Italy and overseas.

In particular it is Ingemar's, and its sister company Trading & Services, capacity to perform as an engineering and main-contractor which are decisive in acquiring diverse and important commissions: from the operations for Vento di Venezia in Venice to the new Marina di Diamante in Calabria and especially for the ongoing projects in Kuwait. The company's other strong points have also been crucial in overcoming the current economic uncertainties: for example a capacity to develop special projects outside the nautical field, diversification in the fixed pontoon sector, systems for

breakwaters and equipment for tourist ports as well as the financial solidity of the company which ensures transparency in their dealings and a capacity to develop new industrial projects for all their clients.

Ingemar is therefore in a positive position to concentrate on the last quarter of the year with a newly integrated control system, constant attention to the professional growth of its workforce and a renewed commitment to research and development so that it will always be a serious, but prudent, company which will continue to expand its presence in the International market with awareness and enthusiasm.



Vento di Venezia and Diporto Velico - Venice

MONFALCONE (GO)

Restyling: floating pontoons instead of fixed pontoons

More and more frequently traditional fixed mooring structures necessitating onerous maintenance are being replaced with floating pontoons: these are more functional, thanks to their continuous freeboard which withstand high seas, and are acclaimed for their low environmental impact. At Monfalcone Ingemar has installed a turn-key project for the Associazione dilettantistica Pescatori Sportivi Cormorano (Cormorant Amateur Sports' Fishing Association). The old wooden pontoons along the river Timavo had been destroyed by shipworm and have been substituted with floating pontoons which follow the original layout. The pontoons are the Slim Size model with reduced widths of 1.6 mts (matching the original pontoons) and the concrete floating elements have been modified allowing them to rest on the riverbed when there are exceptionally low tides. Also at Monfalcone, on the Lisert canal, a series of turn-key pontoons with fingers have been installed, for the Consorzio Sviluppo Industriale: this is part of a series of developments to support the smaller shipyards.



MANFREDONIA (FG)

Lega Navale Italiana: a groundbreaking partnership for yachting in Puglia

Sports Associations were the first to promote the development of yachting tourism in Italy and they continue to be the main supporters of yach races, sporting events and activities. Over the past 20 years Ingemar has established a firm professional relationship with the Lega Navale of Manfredonia and this has continued to grow and develop into a mutual trust and understanding. This year has seen a new and important extension to the club's landing stages: the club is very active in promoting sailing as a sport and is an excellent organiser of the Gargano regatta, now in its 19 year.



MONTENEGRO

Pontoons and new berths for Porto Montenegro at Tivat

In less than three years since work began at Porto Montenegro the port has become a popular tourist destination for the elite Adriatic sailing community, mainly due to its particularly beautiful surroundings, the quality of residential buildings and also the port services. This project for a new "Monte Carlo of the Adriatic" is now seriously materialising. Ingemar's cooperation continues with the installation of new floating pontoons: this is a series of ad hoc projects to ensure new berths and moorings and to allow for separate moorings for the Marinas service vessels.



VDV: a dream built on water

With the laying of the final pontoons recently concluded, the redevelopment and enlargement of the Vento di Venezia yacht development on the Island of Certosa has ended: this is one of the most evocative places in the Venetian Lagoon and close to Piazza San Marco. The VdV (Vento di Venezia) was founded in 2003, thanks to the enthusiasm and passion of young Italian yachtsmen such as Giovanni Soldini and Alberto Sonino, and has become an important exponent of yachting in Venice and elsewhere.

There are 300 berths for yachts up to 35 mts long, mainly on floating pontoons and fingers, with water and electricity connection, wi-fi access and 24-hour CCTV: more importantly, and unique in the Lagoon, there is a depth of 3.5 mts. There are also workshops and hangars, showers and laundries, a sailing school, a sailing shop, an hotel and a bar-restaurant "Il Certosino". All this is surrounded by an urban park of 22 hectares, easily accessed by public transport, and the area is currently part of an important re-development project by the architect Tobia Scarpa. VdV is increasingly being chosen by many international and Italian sailors who choose to moor their yachts on the Isola della Certosa, guaranteeing they have a "pied-à-mer" at Venice!

On the nautical side, Ingemar conceived and built a tailor-made project following the shape of the shoreline and respecting the specific functional needs of the facility. This was a complex and challenging project where it was necessary to understand and overcome the problem of integrating structures and finishings suitable to the very delicate environment of the Lagoon and the island: it was accomplished thanks to natural materials, unobtrusive volumes and finding technical solutions to camouflage structures where necessary. It was a fantastic work experience and all involved worked enthusiastically in a climate of teamwork and enthusiasm.

The floating pontoons and, in part, the fixed piers, are differentiated by their widths and structural strength according to their various placements (pontoons under the piers, fingers perpendicular to the shore and access pontoons for the ferry boat landing platforms) as well as the moorings (bow, stern or sideways using both bow and stern lines) and the dimensions - from 10 to 35 mts in length. The type of standard modules and the numerous special elements are of the FE/ST series with variable widths from 1.6 to 3 mts, steel load-bearing structures, walkways in exotic hardwoods and floating elements in reinforced concrete with expanded polystyrene core. As far as tide levels and the sandy seabed are concerned, anchorage of the pontoons is by fixed steel pilings to the seabed and sliding devices, systems which ensure maximum precision of the pontoon arrangement and also limit friction to the connecting joints as well as minimising the need for maintenance.



TRIESTE

Special floating structures for official and military transport

Ingemar has always aimed at diversification in their designs, proposing special floating structures as well as their normal production lines for the yachting sector. The functional characteristics and adaptability of floating structures have also convinced both designers and the end users of their advantages for both professional and military use.

At Trieste, for the redevelopment of the historic basin called Sacchetta run by G.C.OO.MM., Ingemar supplied the firm of S.T.E.S. (winner of the redevelopment competition for the docks) with a series of special pontoons for mooring the military craft of the Guardia di Finanza (the Finance police), the Carabinieri and the Coastguard. Each of the various military craft required specific technical solutions for their moorings. The pontoons have split geometric forms which follow the shape of the dock - the Fratelli Bandiera wharf. Pontoons in steel and floating concrete units were used. Particular attention was paid to the anchorage systems which were solved using steel girders.



DIAMANTE (CS)

An environmental friendly marina

The opening of the new port of the Alto Tirreno Cosentino, Diamante is greatly anticipated. This is to be a Marina which will be perfectly integrated within the surrounding territory and is a popular tourist destination. The sea defences are nearing completion; work on the docks and installation of the floating pontoons will begin in the next few months to ensure the port is operational by next summer; and there will be more than 300 moorings for yachts up to 22 mts. Ingemar will supply the new Marina di Diamante with a turnkey operation for all the floating structures, moorings and anchorage systems, as well as numerous harbour services and equipment for the docks. Ingemar's design commitment for this project was expanded to include the supply of special environmental equipment (water purification for the dockyard and desalination plant) as well as collection plant for sewage and spent fuel oil.



ADRIA (RO)

A floating stage for the Croce Verde festivals

Croce Verde Adria is an energetic voluntary organisation actively engaging with the population of the Polesine area close to the Po delta. Amongst the many awareness campaigns and social activities in which it is engaged are a number of musical events, which this year took place on a floating stage designed and built by Ingemar in record time to celebrate the organisation's centenary and solidarity with the populace. This modern solution in line with tradition offers true floating display for the public along the Canal Bianco in Adria.



KUWAIT

New floating structures for Kieran Marina, US Navy and Port Authority

Ingemar's activity in Kuwait resumes with vigour: the positive testimonials following the installations for the Kuwaiti Coastguard, the Fire Service and the KNPC have generated a new commission this year to construct a special pontoon for the US navy base at the port of Shuaiba.

A floating platform in the port of Shuwaikh is under construction for the Port Authorities of Kuwait City.

The most significant project currently under construction is at the port of Khiran Marine, one of the most important tourist harbours of Kuwait. Ingemar has been entrusted with the design and reconstruction of the pontoons and mooring fingers for the complete rebuilding of the port Touristic Enterprise by Green Line and Dalai Seagull.



ACQUE INTERNE

Landings for ferries and yachts

The alpine lakes are seeing a resurgence in popularity for both national and international tourists alike and 'freshwater' tourism has become increasingly fashionable. Lakes and rivers are rich natural resources and their shorelines are full of history and architecture. Floating structures in these situations are an ideal solution and are particularly suitable where there is often a notable change in water levels, especially the shallow waters which characterise many Italian lakes and rivers. Installation of floating facilities are less invasive than with traditional fixed structures and are more adaptable to the different conditions of high and low water levels. Both public administrators and private investors see a concrete attraction in the creation of new moorings for tourist craft as well as for the development of local tourism, which will of necessity generate new construction projects.

The recent installation of Ingemar's floating breakwaters have brought about the creation of the new floating port at Como by the local council, and the protection and enlargement of landings at the Brovelli shipyards at Ranco on Lake Maggiore. New berths have been installed at Dervio and Bellano, both on Lake Como, and at Solcio di Lesa, Verbania and Angera on Lake Maggiore. New facilities are to be built on the alpine lakes of Caldonazzo (Trento) and Pontechianale (Cuneo). At Biandronno on Lake Varese the landings were restructured and enlarged to create a link with the important archaeological site of the Isolino Virginia.

On Italy's rivers new landings have been constructed in the park of the Po delta at Goro and Luisa, and a special pontoon for the Guardia di Finanza at Porto Levante. At Venice two new mooring pontoons have been installed for the Lagoon's ferries and a series of fingers for mooring water taxis on Ingemar pontoons in the new basin of Tronchetto.



CHIOGGIA (VE)

Restructuring and enlargement for the Mosella Darsena and the Corte Molin

Chioggia and its lagoon continue to attract new sailing enthusiasts and the demand for new berths continues to grow. The existing pontoons and floating breakwaters, which for more than 20 years have contributed to the growth of the Darsena delle Saline, have been boosted this year by two important projects at the Darsena Mosella and the Corte Molin Yacht Club. The Darsena Mosella, with its proximity to the open sea and beach at Sottomarina and which has been in operation for more than 40 years, was bought in 2009 by the Gruppo Boscolo Bielo of Chioggia. As part of this ambitious project of complete restoration and enlargement of the dock basin, Ingemar has been assigned all the work to supply and install the new mooring structures, the electrical, water and fire plant, and the mooring poles for the vessels. The first part of the work has been operational since February 2011: completion of the work, programmed for the summer of 2012, will make available more than 500 mts of floating pontoons with nearly 250 berths for yachts between 12 and 20 mts in length. The Yacht Club Corte Molin is situated within an area of great natural beauty at the confluence of the important Padana waterway with the river Brenta, and less than 3 kms from the sea. This year has seen an addition to the first installation carried out in 2004 along the Canal di Valle, of a new 225 mt long finger pontoon running parallel to the shoreline. The turnkey installation provides first class services to more than 60 vessels from 10 to 15 mt long.



MUGGIA (TS)

Porto S.Rocco expands again

Inaugurated in 1998, Porto San Rocco is still growing and Ingemar, as a trusted partner, is gratified to be continuing in the development of its receptive capacity. In a continuously evolving market, the Marina has designated space in the port for the construction of moorings for yachts between 12 and 150mts following increased demand for more berths. Ingemar's involvement will, as usual, involve diverse aspects: from studying solutions for the layout to the design of anchorages as well as plant facilities, to the turnkey installation of the new horseshoe-shaped landings with two fingers joined by a pontoon, and only one access point with a floating gangway. Ingemar employed their best structures: robust steel framework of the RR series to tackle the strong northerly Bora winds, fingers with box sections for maximum stability, and galvanised and painted structures will extend their durability. The arrangement of pontoons is anchored by a complex mixed system of girders to the docks and chains and concrete mooring blocks.



LA SPEZIA

A luxurious floating marina for the town's residents

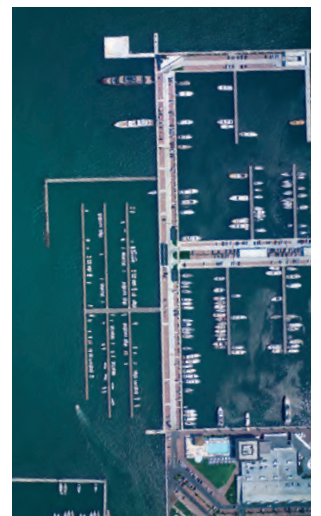
La Spezia is considered a true paradise for yachtsmen: an idyllic environment thanks to the protected bay which allows sailing to continue even when the conditions are prohibitively rough outside, the beauty of the coastline hemmed in by the islands of Tino and Palmaria and an almost constant wind to the joy of all sailing enthusiasts.

At the end of October 2010, with Ingemar's usual punctuality, work was finished on the new landings destined for use by the residents of La Spezia. The marina, built entirely of floating elements, is attached to the main jetty of the Porto Mirabello, the new 5 star modern port built by ITN at the end of spring 2010. The landing, also by ITN under its concessionary obligations with the La Spezia Port Authority, has seen renewed cooperation with Ingemar indicating their satisfaction with the work achieved - fixed pontoons on pilings and floating piers installed within the Porto Mirabello. The new marina, designed by the architect Lorenzo Zacutti of La Spezia, guarantees moorings for nearly 700 vessels of between 8 and 15 mt lengths on 800 mts of floating pontoons of the King Size series: these are Ingemar's top of the range production in strong steel frames, concrete floaters with expanded polystyrene core and 3 mt wide walkways in exotic hardwood.

The fingers are arranged in double spines along a central floating pier of nearly 100 mts length and 6 mts wide. Access is by a large floating gangway of 6 x 12 mts constituting a functional and visual extension towards the shore with a very gentle slope and an absence of any barriers. The berths are protected from the short steep waves generated by sidewinds by a series of floating breakwaters in reinforced concrete of the F/CA type, dimensions 20 x 4 mts and displacement of 67 tonnes, for an overall expanse of 220 mts.

The surface on the walkways of the breakwaters is in exotic hardwood which are more aesthetically pleasing and have a more satisfactory environmental impact. The characteristics of this installation are emblematic of the special advantages of floating structures: speed of installation, reduced investment costs, minimum environmental impact and mobility and flexibility of the layout which can be adapted to suit different requirements. The wide range of Ingemar's structural solutions, aimed at specific functional requirements, plus their long experience in managing complex projects were, yet again, the decisive factors in acquiring this important commission.

The new floating marina is a great new resource for yachting and yet another testimonial for Ingemar in the bay of La Spezia, in addition to the installations carried out for the Assonautica and the Cantieri Riva of the Marina del Fezzano and the landings at Le Grazie where the performance and durability of the pontoons and floating breakwaters have overcome severe tests in the 15 years since their construction.



EVENTI SULL'ACQUA

Boat shows and exhibitions: 12 months of participation and prominence

Ingemar's pontoons are always present at the major Italian boat shows demonstrating a consolidated and significant national leadership in the sector. At Genoa, Venice and Catania Ingemar is the established supplier and technical sponsor. For the 50th Genoa Boat Show 10,000 sq mts of floating surfaces for yachts and stands over the water were installed to connect all of the exhibitions' basins. The location for the 10th Venice Boat Show in the new areas of the S. Giuliano Park have been given a new layout of Ingemar pontoons, with wide gangways and comfortable moorings, on the Lagoon opposite the Serenissima. At the 16th Catania Boat Show in March, the main exhibition in Southern Italy, Ingemar pontoons were again fully booked. Ingemar pontoons were also used for the Boat Shows at Fiume (Rijeka) in Croatia, and Budva in Montenegro. There are many new ventures which have seen Ingemar as technical sponsor and their floating pontoons used as platforms for events: for the TAN at the Naval Academy at Livorno, for the Dinghy World Cup organised by the Compagnia della Vela Venezia, for the Italian Snipe class championship at Porto San Rocco di Muggia and the Mille Miglia motorboat race at Como as well as the Class I World Offshore Race at Stresa on Lake Maggiore. With the extension of the pontoons for the Lega Navale di Manfredonia, moorings for the increased number of participants to the 19th Regatta del Gargano was ensured. Small temporary landings were installed on pontoons by Ingemar for the "Navigar m'è dolce" event, organised by UCINA at Milan's Idroscalo, as well as for the Festa della Marineria of La Spezia, used as a floating stage for music festivals. For the Festa della Marineria at La Spezia the historic sailing ships were moored on Ingemar pontoons. All in all, a year of many events and much dedicated hard work but also much satisfaction watching the increasing popularity of the big international boat shows and sailing events where Ingemar is now a strong technical partner and has developed a solid relationship with the organisers.



SAN LEONE (Agrigento)

Mediterranean and La Bolina: two new landings below the temples of Agrigento



SALERNO

New berths on continuous floating pontoons for the Port Authority



PORTO SAN PAOLO (Olbia)

Twenty years later Ingemar is back at Tavolara: a new expansion for Marine Assistance

Factory, technical and commercial offices
Via Martin Luther King, 50 - 31032 Casale sul Sile (TV)
Tel. 0422 702412 - Fax 0422 820673
treviso@ingemar.it www.ingemar.it

INGEMAR

Registered offices and administration
Piazza IV Novembre, 4 - 20124 Milano
Tel. 02 67078528 - Fax 02 67380242
milano@ingemar.it www.ingemar.it